

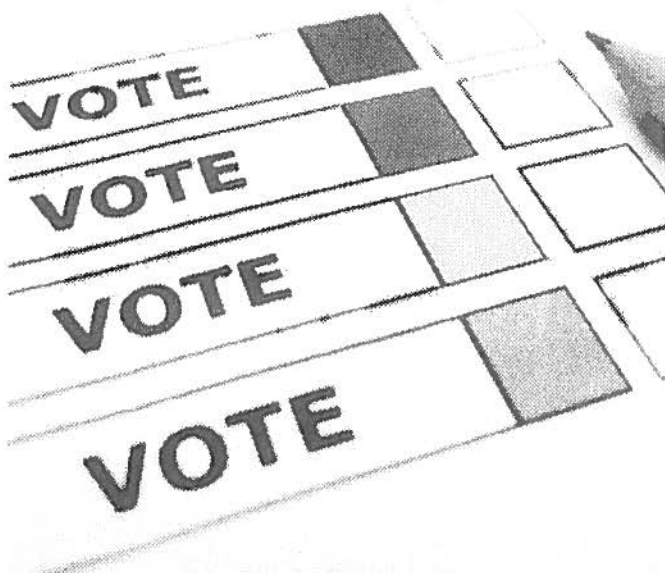
YOUR VOTE IS IMPORTANT



**Disability + Voting
= Power**

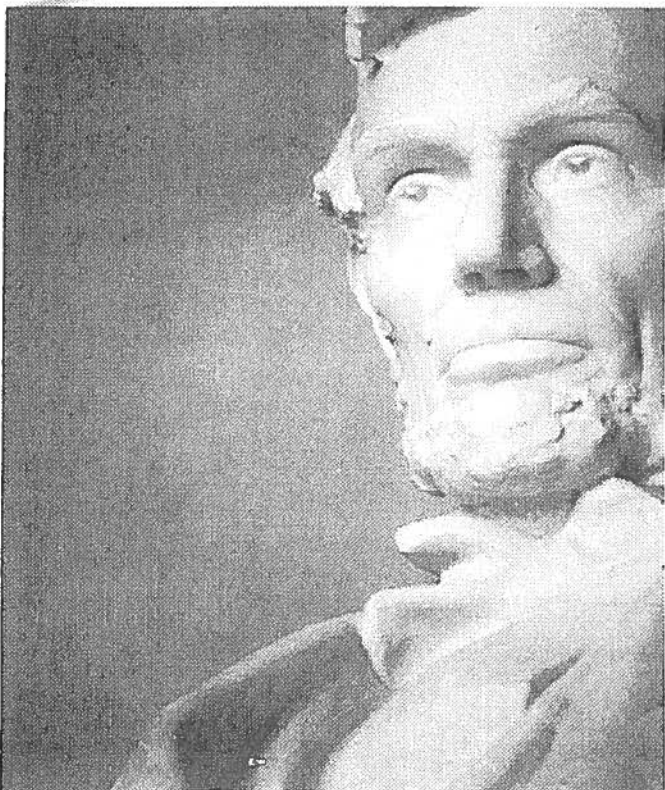
Call for more information
800-776-5746
TTY 800-719-5798
www.disabilityrightsca.org

WHO CAN VOTE?



To vote in California you must be:

- 18 years old by the day of the election
- A citizen of the United States
- A resident of California
- A registered voter

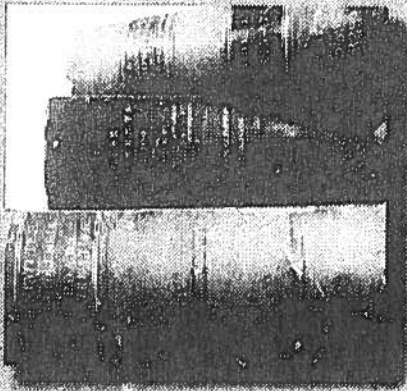
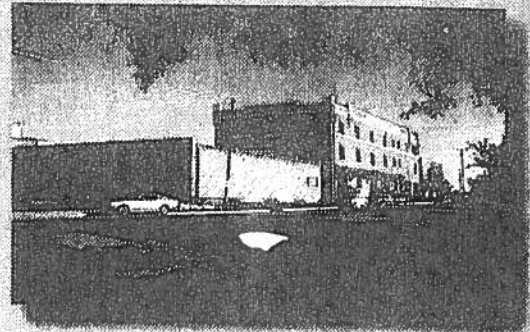


You must not:

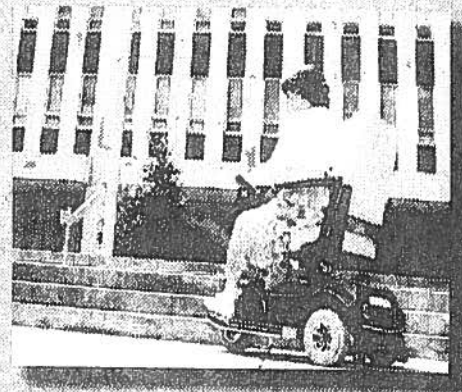
- Be in prison or on parole for a felony conviction
- Have been told by a judge that you cannot vote

YOU CAN VOTE...

Even if you live in a group home or state developmental center



Even if you can't read or write



Even if you use a wheelchair or have other mobility disabilities



Even if you have visual impairment or you are deaf or hard of hearing

As long as you are old enough, a citizen, live in California, have not been told by a judge that you cannot vote, are not in prison or on parole for a felony conviction and have registered to vote

YOU HAVE A RIGHT TO VOTE!

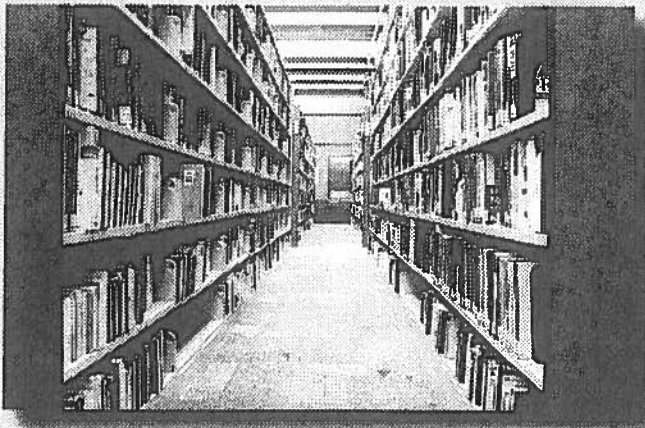
Your case manager (also called service coordinator), your family, or your service provider cannot tell you that you can't vote.



Even if you have a conservator you may still have the right to vote because this right has to be taken away by a judge - if you have a conservator you should check to see if the right to vote was taken away by a judge.

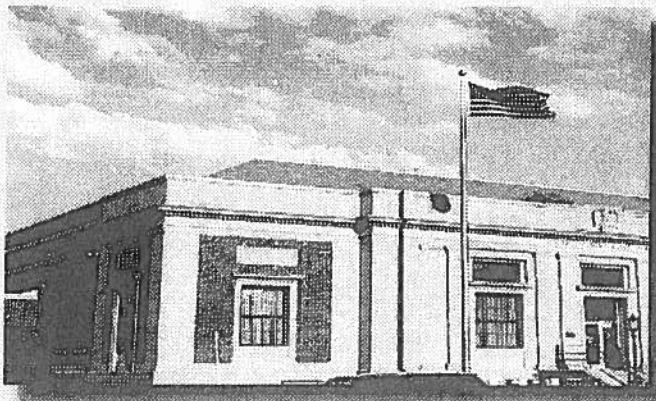
If you have any questions, you can contact Disability Rights California or the Office of Clients' Rights Advocacy (OCRA).

WHERE CAN YOU GET A REGISTRATION FORM?



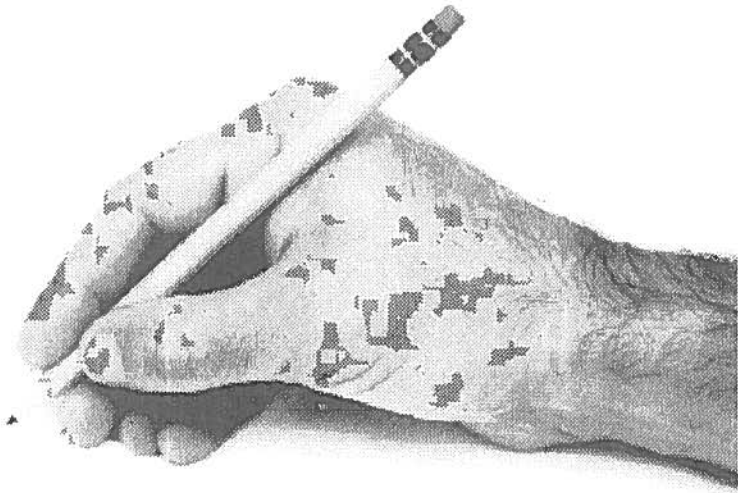
You can pick up a voter registration form at many places, including the following locations:

- Regional Center
- Local library
- County elections office
- The Department of Motor Vehicles (DMV)
- The U.S. Post Office
- Secretary of State's office
- Disability Rights
- Customs office
- Office of Citizen's Rights
- Advocacy office



Along with the voter registration form, the regional center can give you another form (sometimes called a "pre-notice" or "notification" form) that lets the regional center know whether you would like to register to vote or not and if you want to register, whether you want the regional center to help you.

WHAT INFORMATION DO YOU NEED TO FILL OUT A REGISTRATION FORM?



Some examples of information you need:

Your name

Your address

Your date of birth

A California ID or driver's license (or the last 4 numbers of your Social Security number if you don't have an ID or driver's license)

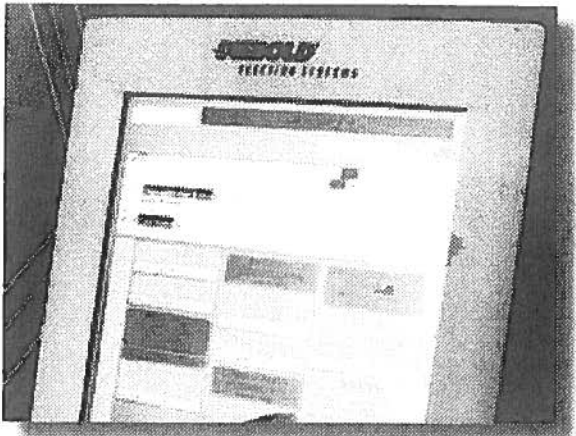
Optional:

You can choose a political party or not.

You can choose to receive a vote-by-mail ballot.

You can choose your language preference, including: English, Spanish, Chinese, Vietnamese, Korean, Tagalog and Japanese.

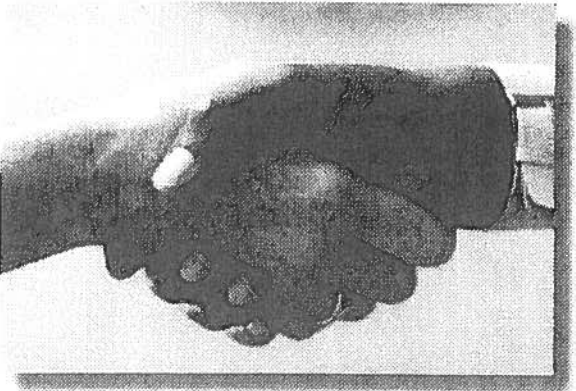
CAN YOU GET HELP REGISTERING TO VOTE AND HELP VOTING ON ELECTION DAY?



Yes:

By law, the regional center has to help you fill out the voter registration form if you need help.

You can get help filling out the voter registration form from your case manager at your IPP meeting and have it sent off that day.

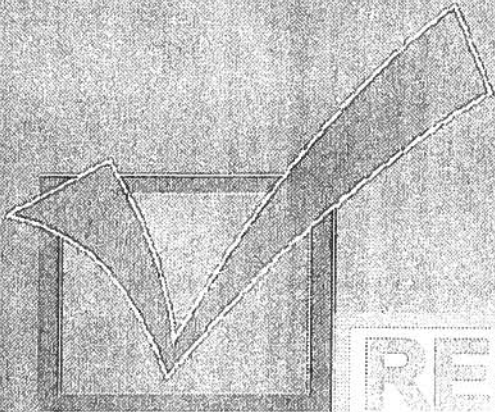


You can have your IPP say you will have help with the voting process on Election Day or help with reading the vote-by-mail ballot. An example of who will help you could be your ILS or SLS provider.

Where else can I get help?

On Election Day, you can get help with the voting process from a poll worker at your poll site.

You can have someone, like a friend go with you to the polling place to help you.



REMEMBER:

You get to decide how you want to vote.



People *can help you* in the voting process BUT no one can tell you how you should vote or vote for you, including your case manager, parents, service providers or group home staff.

WHY VOTE?

It is a responsibility of a citizen.

Your vote influences which laws are created and who works in the government.

Voting is important to “our” community. Our issues are political, too!



OUR ISSUES



What are
"our" issues?

Public transportation,
regional center services, Medi-Cal, IHSS,
parks & recreation, fire
fighters, schools.

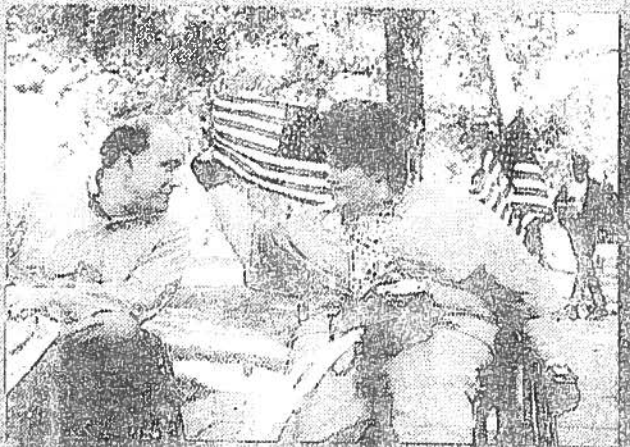


Which issues
are important to
you?



Elected people influence issues.

People
who vote -
Like you and me
- chose elected
people by voting.



WHAT IS IMPORTANT TO YOU?

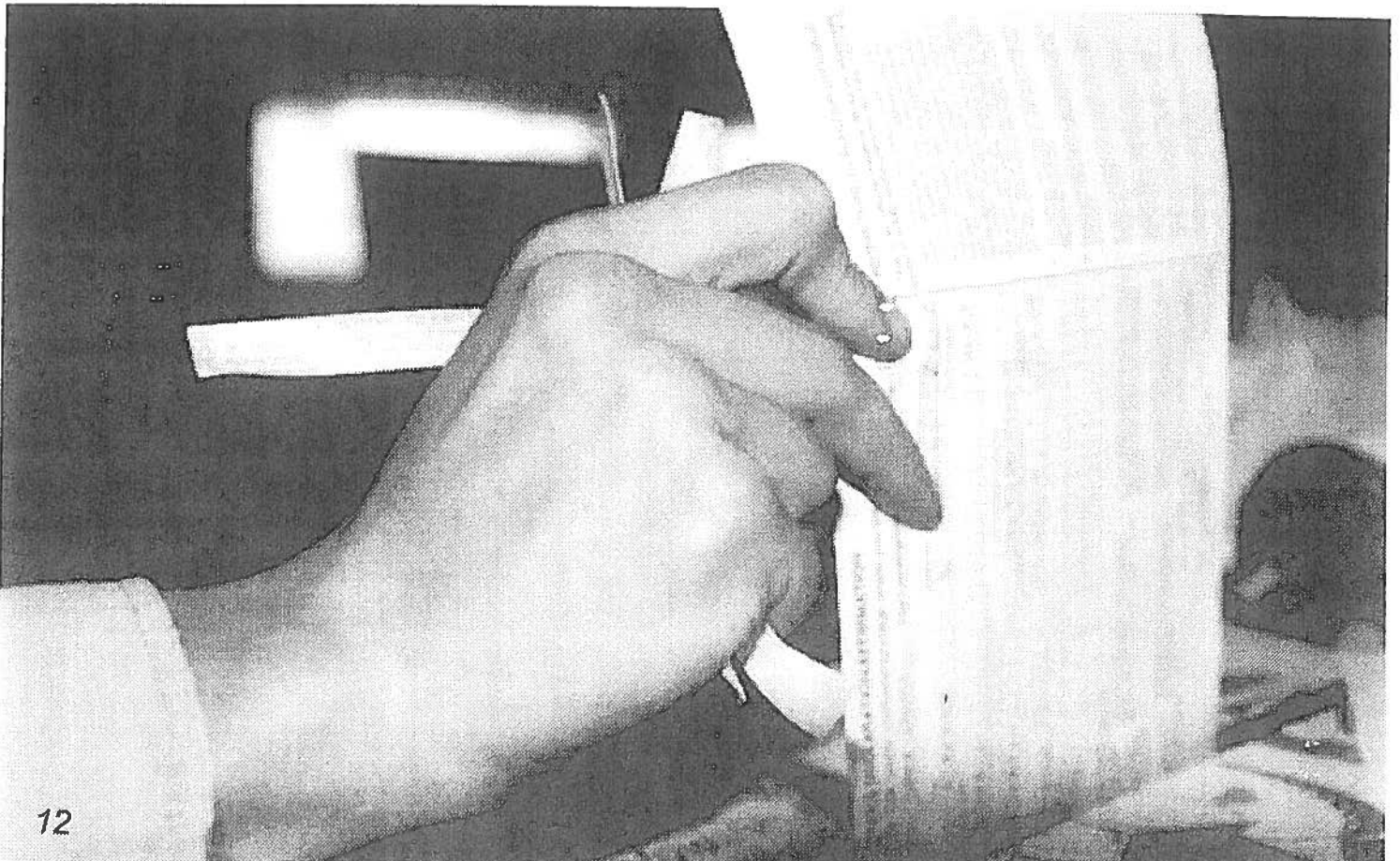
What do you want changed in your community?

Housing costs?

Transportation routes?

More money for minimum wage jobs?

Something else? What?



WHAT IS CIVIC INVOLVEMENT?

Voting

Contacting your local officials

Writing letters to the newspaper



Participating in committees or city and county activities

Speaking out on important issues

Meeting with your elected officials

Self-Advocacy

HOW YOU CAN GET INVOLVED IN YOUR COMMUNITY

You may be asked to sit on a board of directors like:

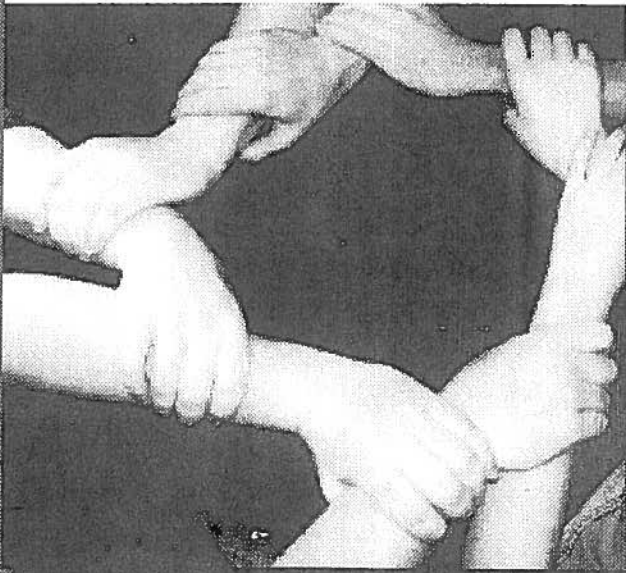
Regional Center boards of directors

Consumer advisory committee

Disability Rights California board of directors

Department of Developmental Services

Consumer Advisory Committee



Area Boards

Or any other boards that might affect your community

WHAT YOU CAN DO TO PREPARE YOURSELF TO VOTE

You can do things such as:

Read the sample ballot that is mailed to you

Get easy to understand materials at:

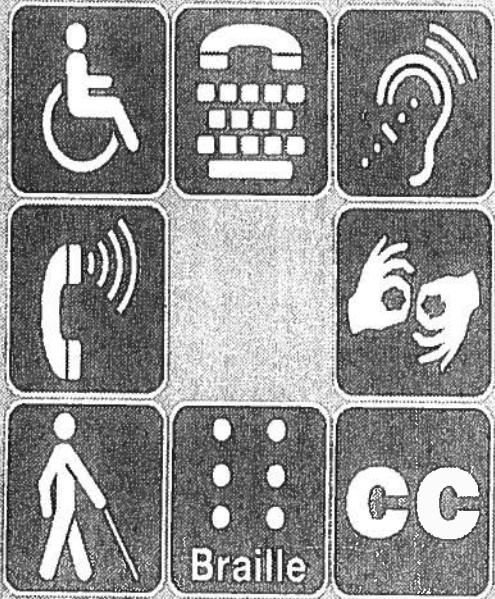
www.easyvoter.org

Talk to your family, friends or neighbors

Read or listen to the news on T.V., radio or internet

Talk to disability rights groups or your People First group





IF YOU HAVE QUESTIONS ABOUT YOUR RIGHT TO VOTE, CALL:

Your Regional Center

Your Area Board

Your County Elections Office

The Secretary of State: 1-(800)-345-VOTE (8683)

The Clients' Rights Advocate for your Regional
Center 1-(800)-390-7032

Disability Rights California 1-(800)-776-5746



California's Protection & Advocacy System

Toll-Free Statewide

1-800-776-5746 (Voice)

1-800-719-5798 (TTY)

www.disabilityrightsca.org

**Sacramento Offices:
Legislation & Public
Information Unit**

**Peer/Self-Advocacy Unit
Developmental Disabilities
Peer/Self-Advocacy Unit
Sacramento Administrative
Sacramento Regional Office**

1-916-504-5800 (Voice)

Bay Area Regional Office

1-510-267-1200 (Voice)

Fresno Office

1-559-476-2000 (Voice)

Los Angeles Regional Office

1-213-213-8000 (Voice)

San Diego Regional Office

1-619-239-7861 (Voice)

Office of Patients' Rights

1-916-504-5810 (Voice)

**Office of Clients' Rights
Advocacy**

1-800-390-7032 (Voice)

1-877-669-6023 (TTY)

1-916-504-5820 (Voice)